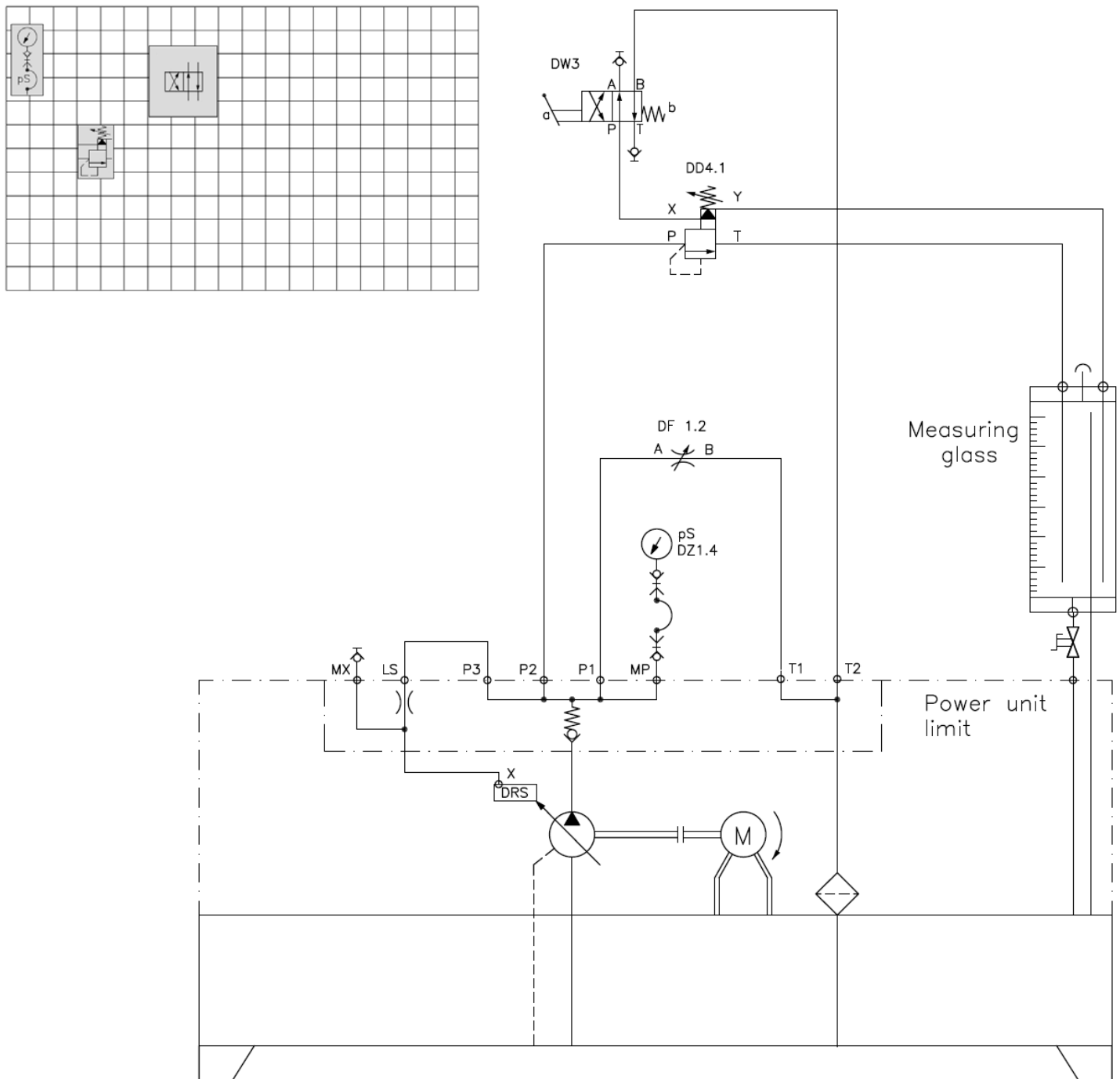


Pilot Operated Relief - Venting

Part I

- Connect the circuit shown.
- Start the hydraulic trainer and close the throttle valve (DF1.2) completely
- Adjust the pressure relief valve (DD4.1) until 600 psi is shown at the gauge.
- Shift the handle of the directional control valve and explain what happens



Part II

- Change the circuit to reflect the following schematic.
- Shift the handle of the directional control valve and explain what happens
- How does this differ from part I?
Why?

